

**TATE MODERN, LONDON**

17/06/2016 — 31/12/2016

## THE NEW TATE MODERN, OPENS WITH A NEWLY ACQUIRED PERMANENT COLLECTION OF GUY BOURDIN

The new Tate Modern will open 17 June 2016, with plans for entirely new collection displays, 75% of which will have been acquired since 2000, opening on 17 June 2016. The new displays will demonstrate how the collection has been transformed since Tate Modern first opened. The world's most popular gallery of modern art will be even more international, diverse and engaging, with works by over 300 artists from around the world displayed across the existing Boiler House and the new Switch House – the most important new cultural building in Britain for almost 20 years.

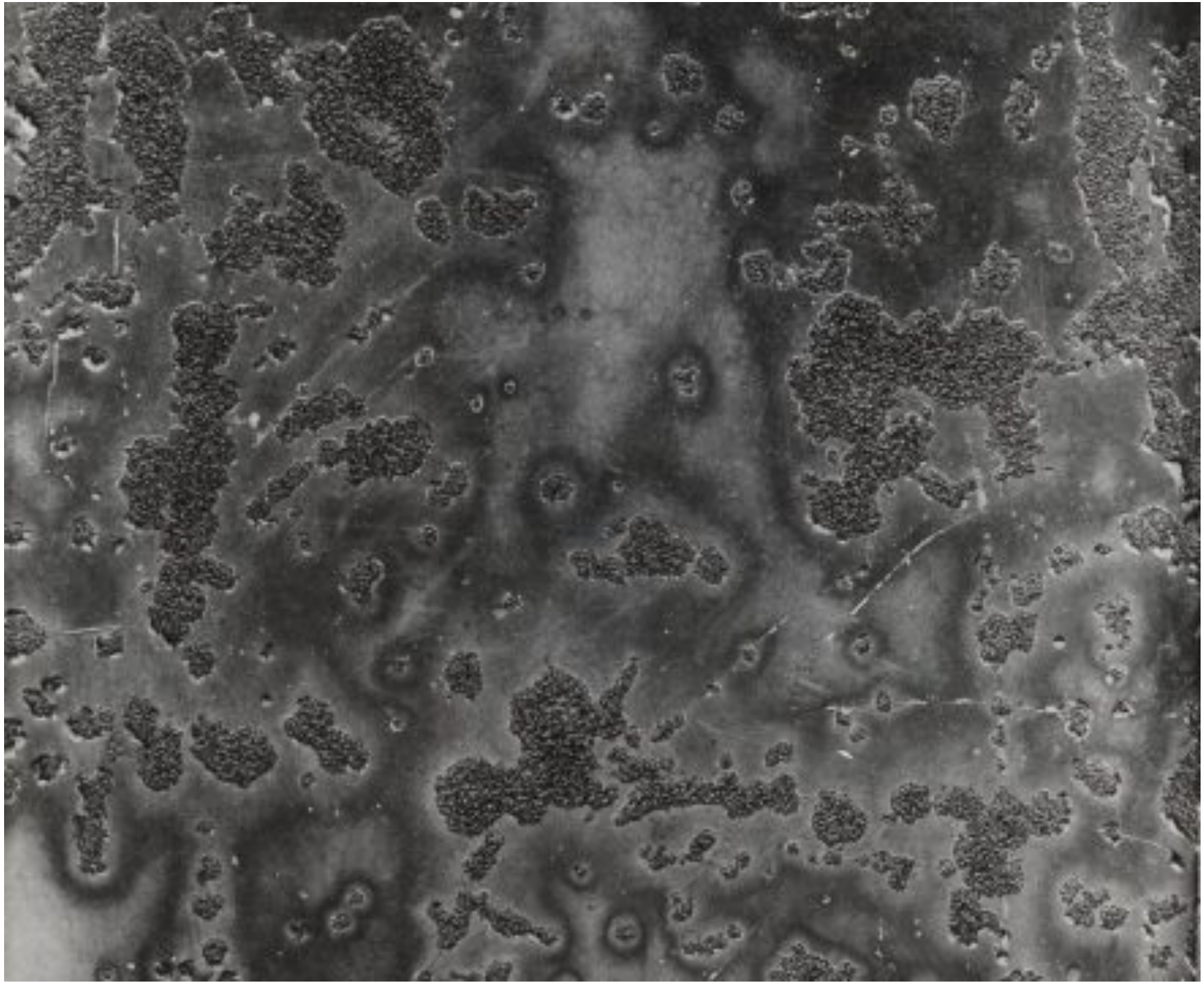
New display includes a selection of works by Guy Bourdin acquired by the Tate in 2014.

See Tate Collection – Guy Bourdin

“As curators we are often looking to identify the most important body of work by an artist or the most influential period of their career. However what I find particularly interesting is looking at the period immediately before this breakthrough moment, as it is in this build up that you often see a shift in direction and an exciting glimpse of what's to come. This is exactly the case with the group of works Tate recently acquired by French photographer Guy Bourdin. This exciting group of twenty-seven early works captures an important moment in the development of his photo- graphic career, highlighting his influences and the foundations of what later became known as his unique photographic language.”

Shoair Mavlian ,Tate, The Modern Eye

### Selected works

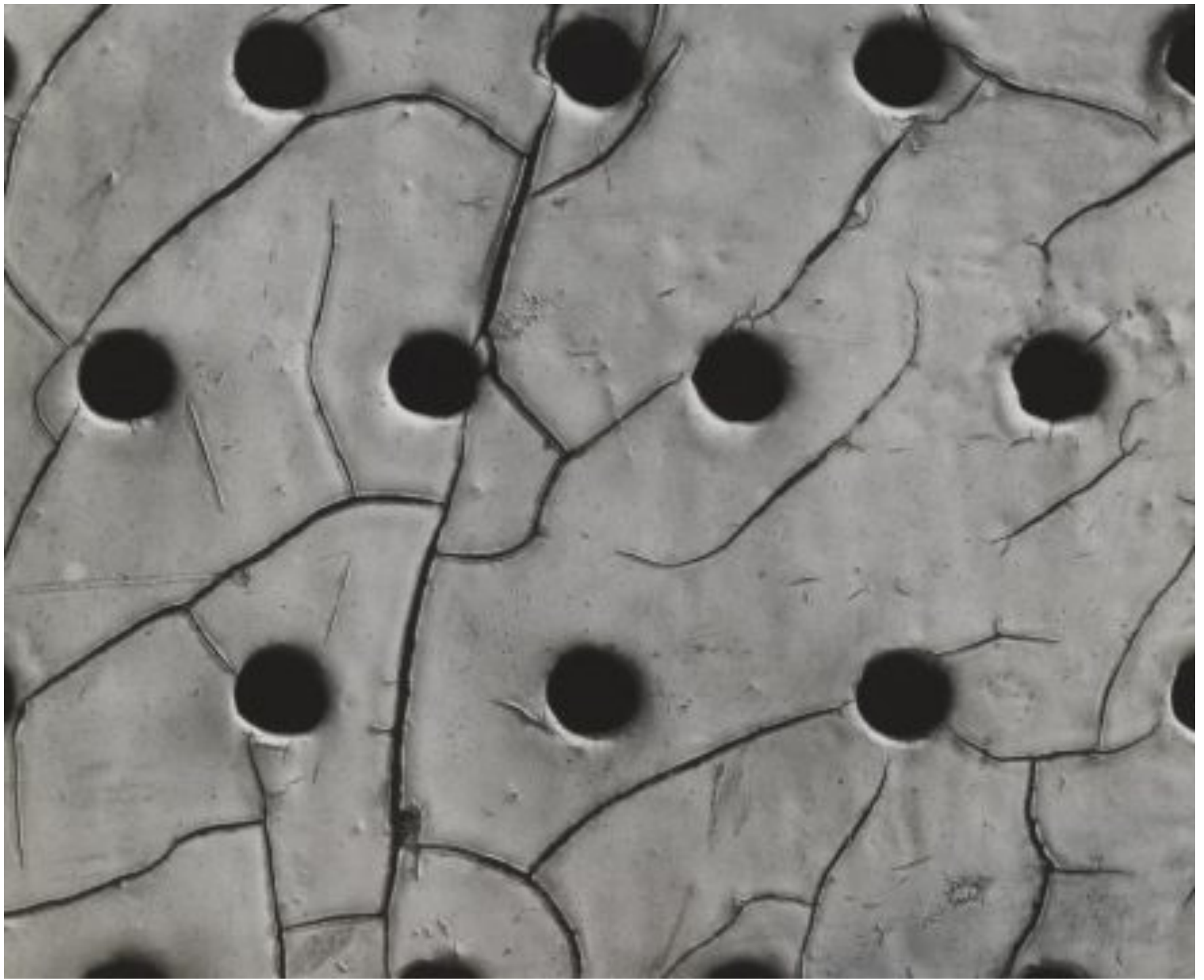
























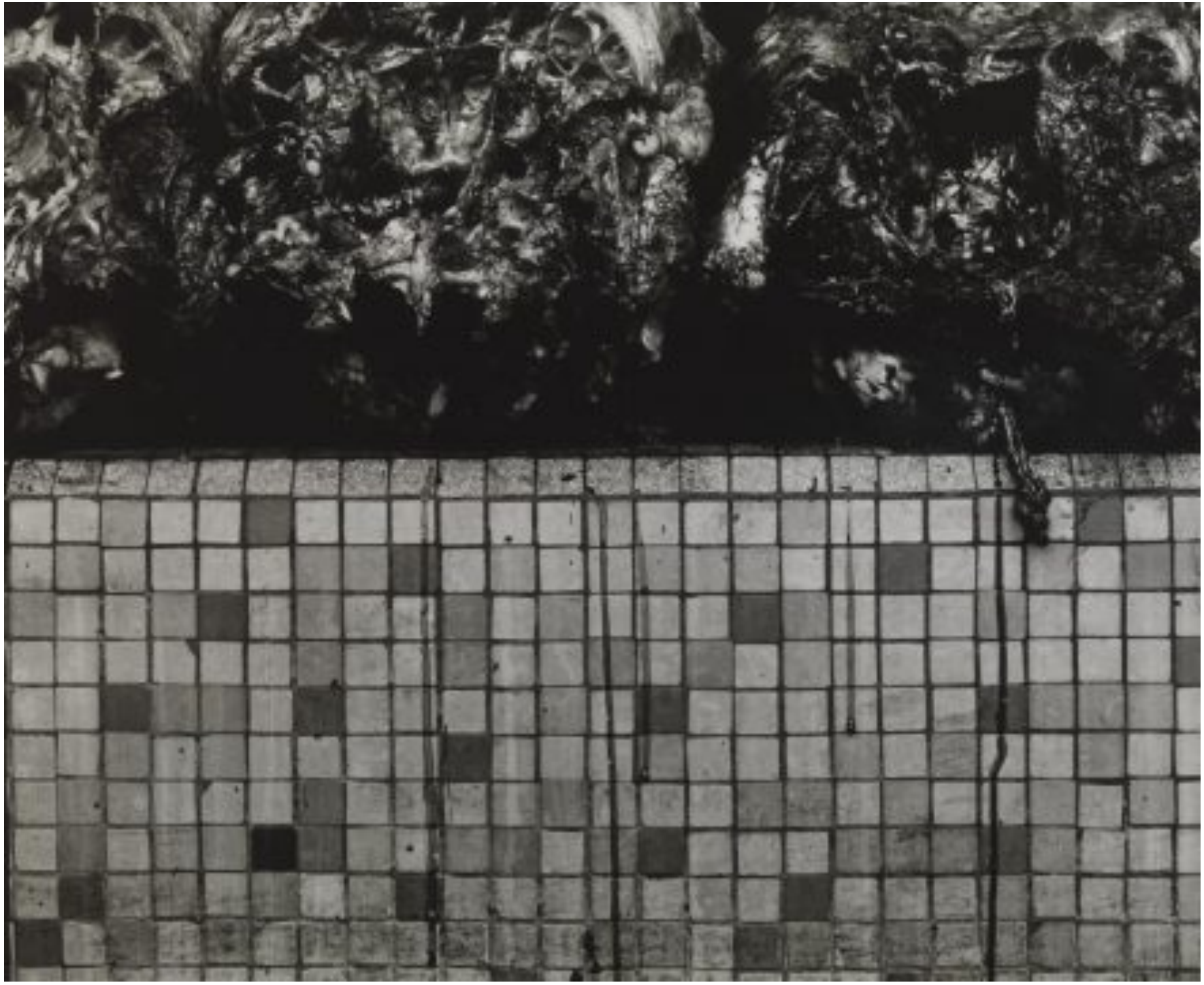




























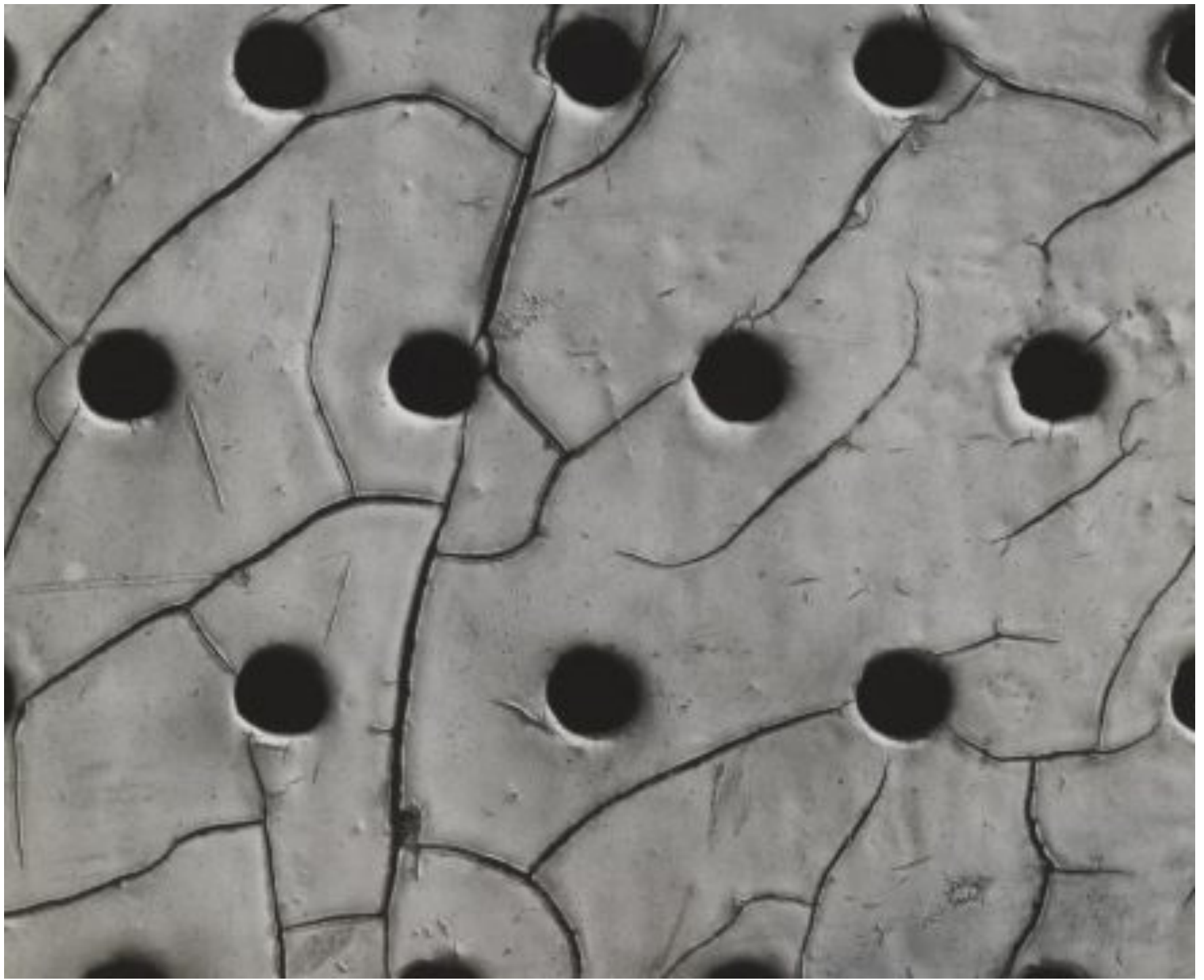




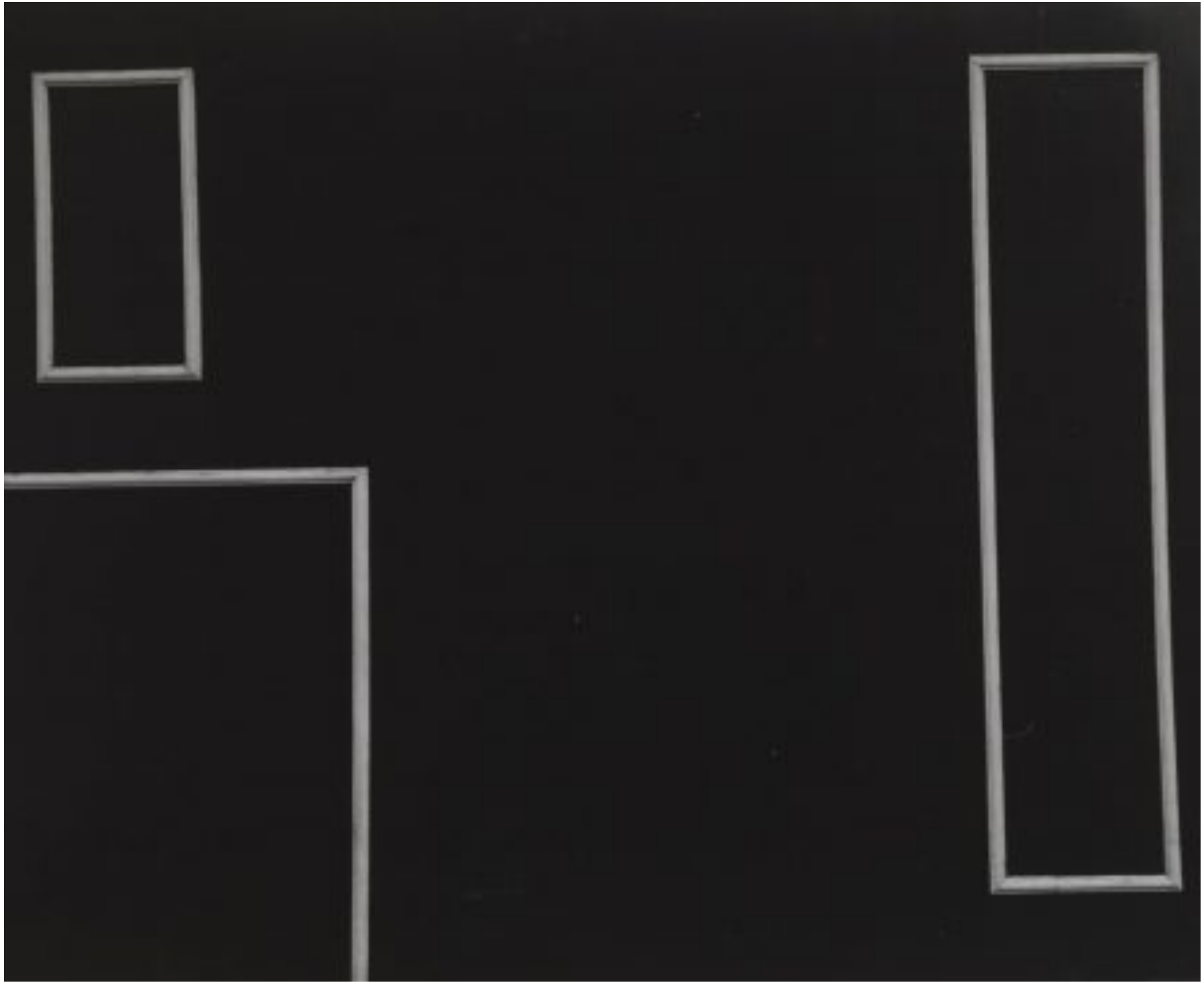






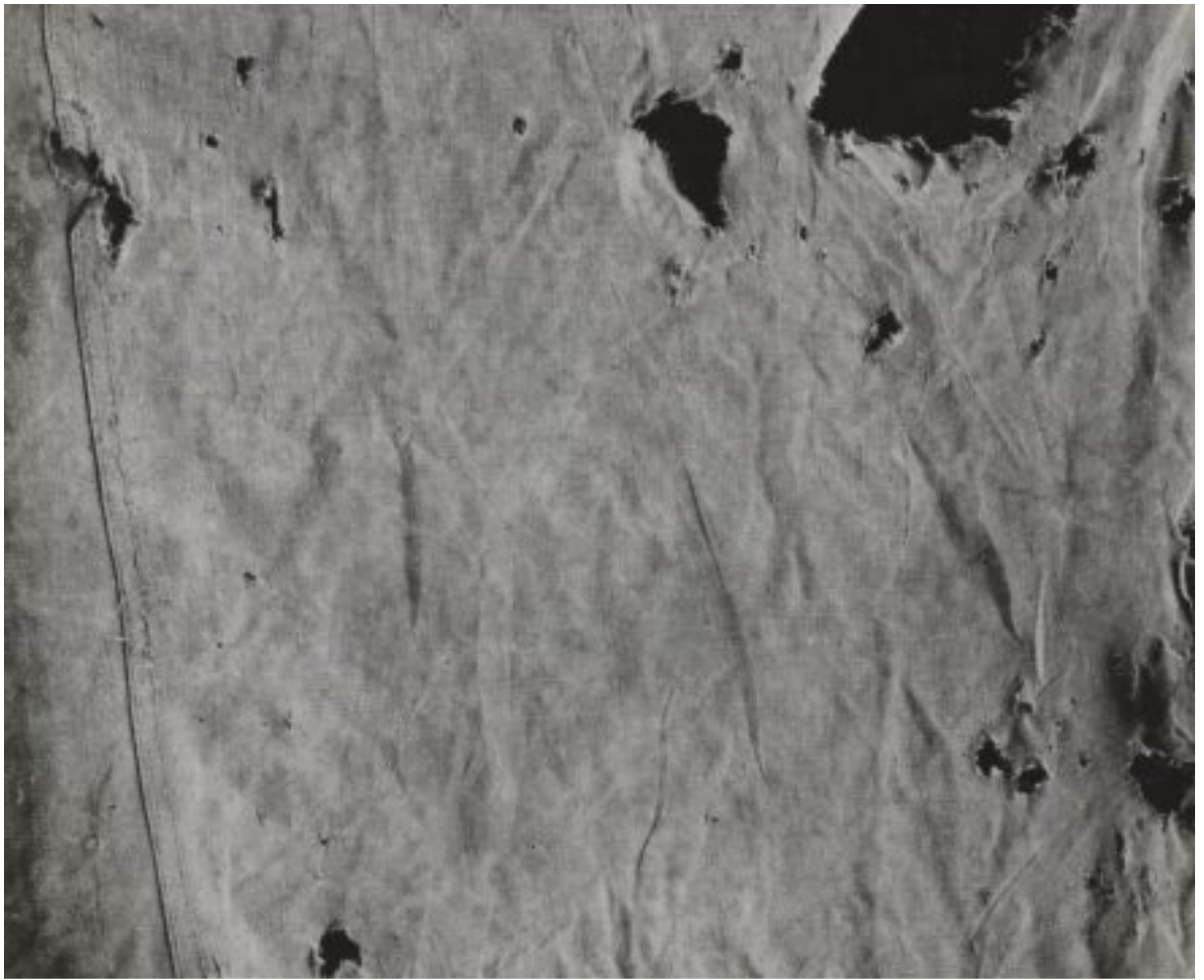














© 2016 LOUISE ALEXANDER GALLERY

All images are copyright of the gallery and the artist or their estate. They cannot be reproduced without explicit authorisation and adapted credits. [Terms and conditions](#)

---

**PORTO CERVO**

Promenade du Port Via Aga Khan, 1 07021 - Sardinia - Italy Email: [info@louise-alexander.com](mailto:info@louise-alexander.com)

---

**ON APPOINTMENT**

London, UK Paris, France Los Angeles, US Tel: +44 7732470247

---



LIKE US ON FACEBOOK



FOLLOW US ON INSTAGRAM

